

# **VAG K+CAN PROGRAMMER**

# **USER MANUAL**

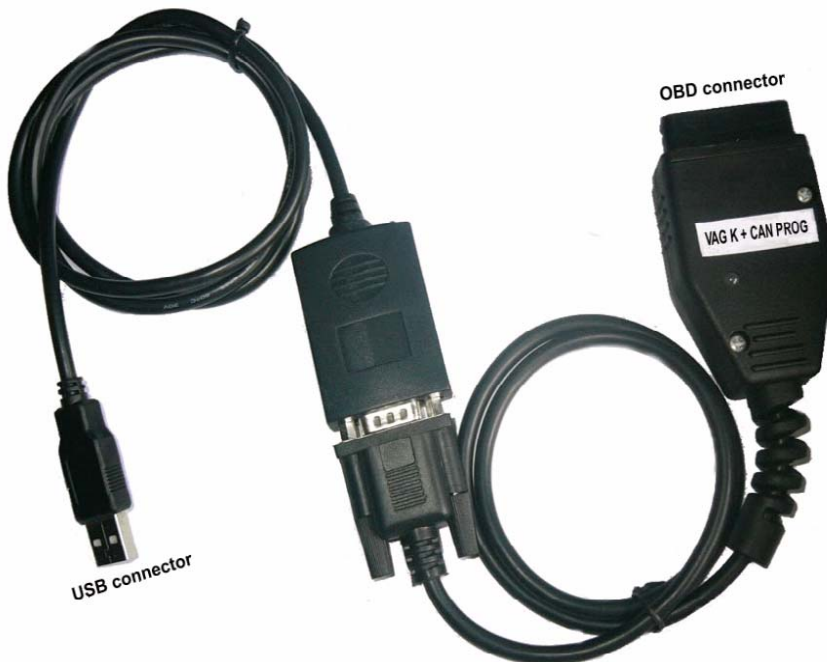
## 1. Functions

Support mileage correction of AUDI A3 ,A6,A8,Q7 and CADDY, GOLF5, PASSAT B6, SAGITAR, TOURAN by diagnostic socket .

Support Tv activation of A6L,A8L.

Support Login code reader of TOUAREG,CAYANNE, AUDI A4.

## 2. hardware introduce



- USB connector  
connect to the USB port of computer
- OBD connector  
connect to diagnostic socket of cars

### 3. Software Setup

**OS:** Windows (Win2000, WinXP)

**Software tool:** VAG CAN PROG SETUP1

Installing the software as follow steps

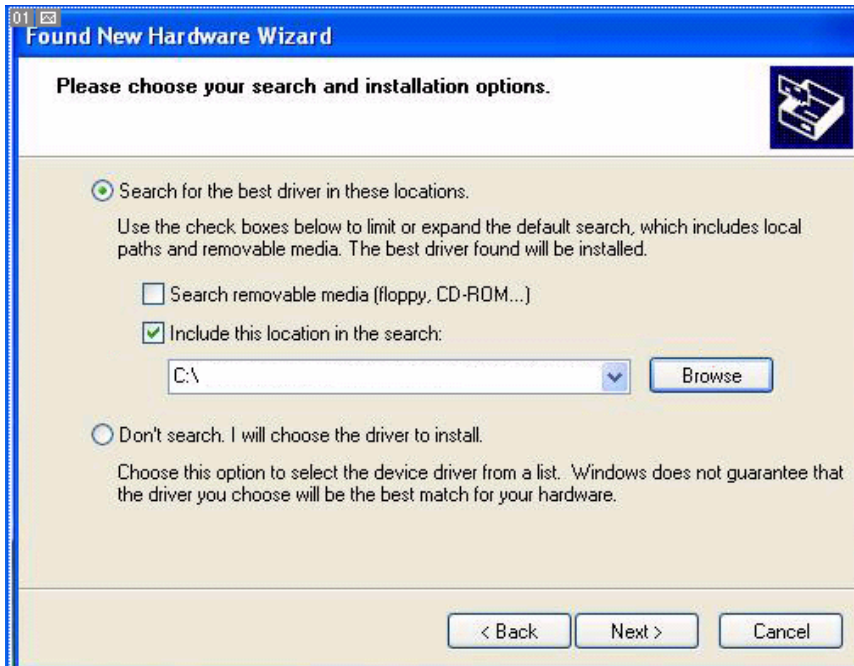
#### 3.1. USB Driver Installation Instructions

Before using , must install USB driver of our equipment .  
Detail as follows:

(1) Connect the hardware to computer . The Add New Hardware Wizard should appear. In this step, Choose "Install from a list or specific location(Advanced)", click "Next"



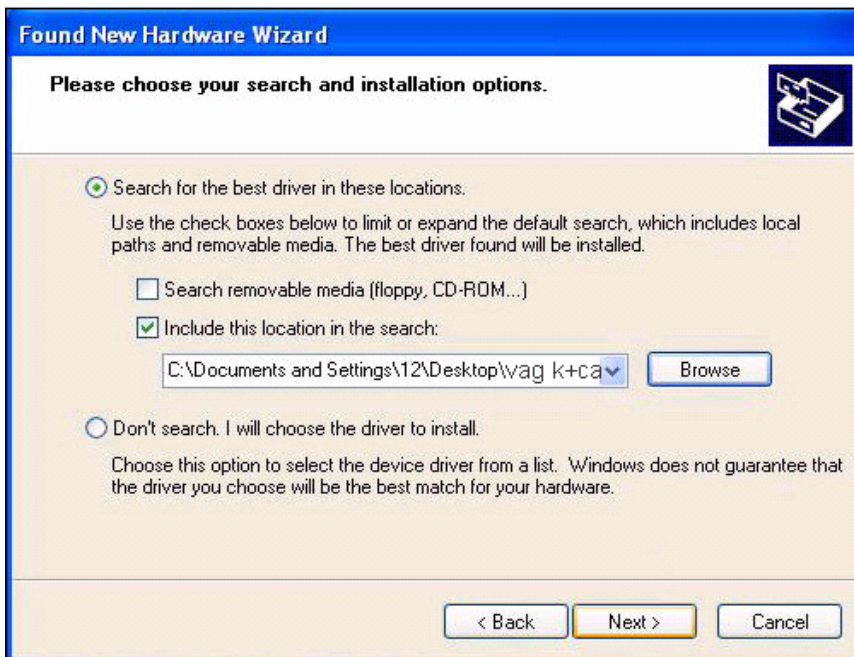
(2) The Add New Hardware Wizard should give you the choices as picture.Choose "Include this location in the search", and click "Browse"



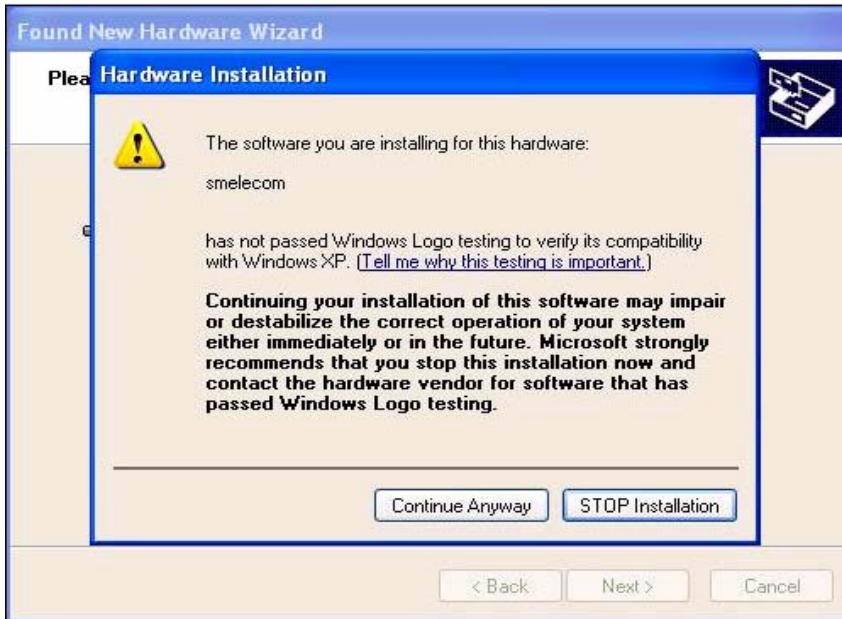
(3) Search the driver's folder and click "OK".



(4) Click "Next"



(5) Choose "Continue Anyway"



(6) Click "Finish"



USB driver installation is now completed.

### 3.2. Installing the software

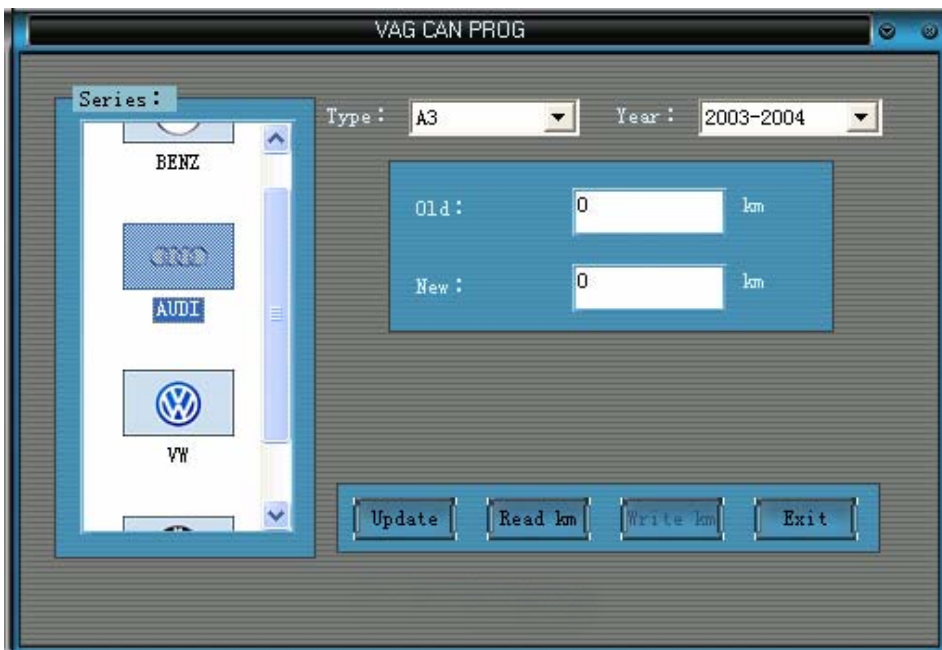
- (1) Double click “VAG CAN PROG SETUP1”
- (2) Follow prompts to install software to your hard drive

### 4. Example of Mileage correction

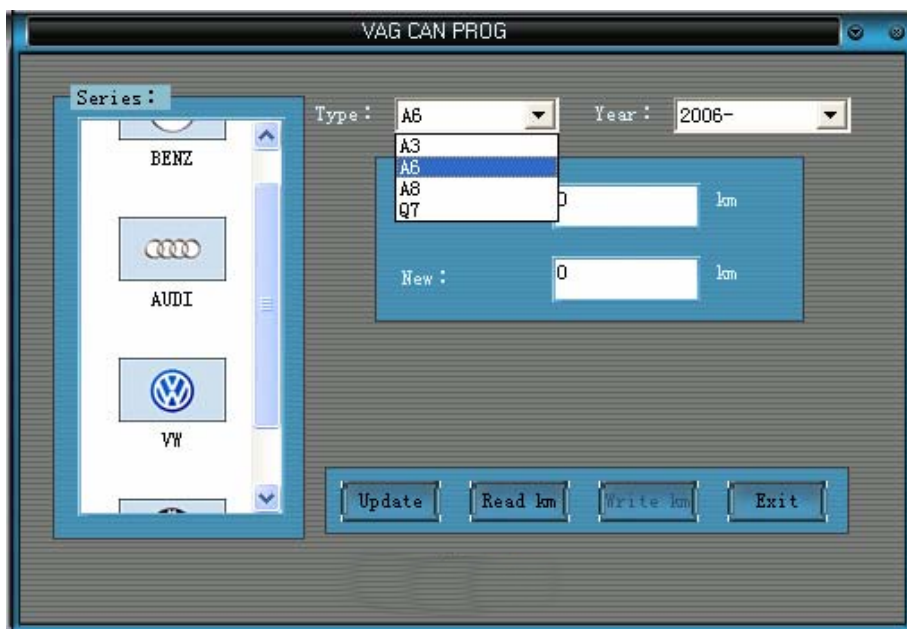
For user understand the process of Mileage correction intuitionistic ,we take the “AUDI A6 (2006-)” as example to explain every step .Open the software at first, main interface as the follow picture.



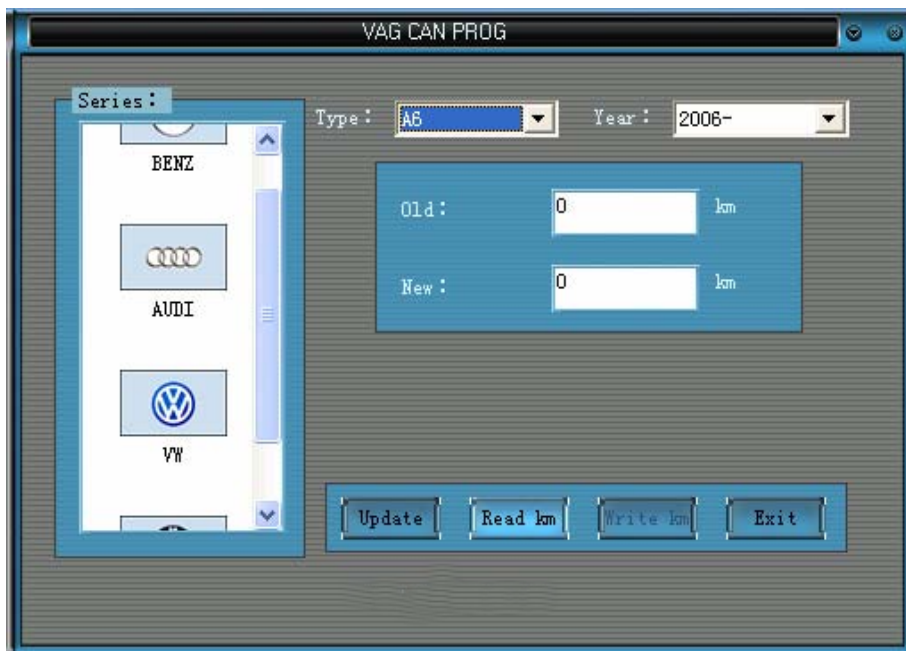
- (1) Select “AUDI”



(2) select "A6" in AUDI series. Year select "2006 -"



(3) Connect hardware complete then click "Read KM"



(4) Original mileage shows for 1000KM. Customer can check it .



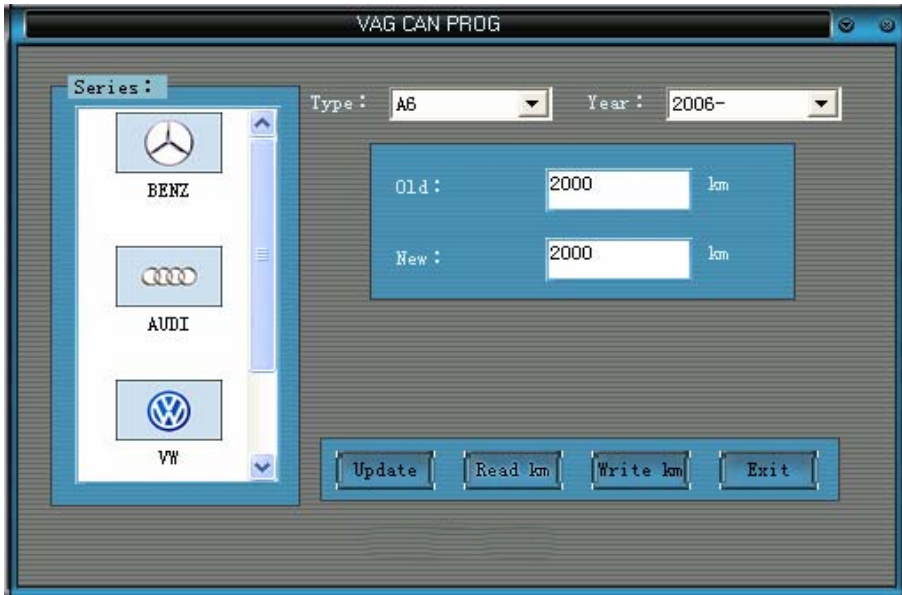
(5) Writing the new mileage in the blank behind the “New” and click “Write km” button .



(6) System will prompt “ KM write successfully” after work end.



(7) Click " read KM " again confirm the mileage change already.



Thus,all works are completed.

## 5. Notice

When you make Mileage correction of AUDI A6 , Q7,must select the right year .If mistake it, odometer will shown 999999 after writing in the mileage . Don't worry, pulling out the odometer fuse at this time ,and joint fuse to odometer ten minutes later .Then select right years to make it according to the steps above .

# HuaWenYi Technology

<http://www.cnreliable.com>

# HuaWenYi Technology

<http://www.cnreliable.com>